



# MHL350 HD

## TRAILER PULLER




**FUCHS**  
A TEREX BRAND




## DESIGNED FOR TRAILER PULLING

The MHL350 F HD is specially designed for trailer pulling, has all-wheel drive, huge towing capacity and is used for a wide range of applications in timber handling. Logs are loaded, unloaded and transported with a trailer over the entire area.

The MHL350 F HD is equipped with a powerful 215 hp diesel engine and a robust HD undercarriage with single tires and dual-circuit braking system.

 215 hp

 74,516-83,335 lbs  
(without attachments)

 Max. 52' 5"

TECHNICAL DATA

OPERATING WEIGHT WITHOUT ATTACHMENT

MHL350 F HD	74,516–83,335 lbs
-------------	-------------------

DIESEL ENGINE

Manufacturer & model	Deutz TCD 6.1 L6
Design	6-cylinder in-line
Functionality	4-stroke engine, direct common-rail fuel injection, turbocharger with charge air intercooling, controlled exhaust as recirculation, diesel particle filter with a continuously regenerating system and SCR catalytic converter
Power	215 hp ( 160 kW)
Rated speed	2,000 rpm
Displacement	6.1 l
Cooling system	Water and charge air cooling with temperature controlled fan speed
Exhaust emission standard	EU-Stage V/ EPA Tier 4f
Fuel tank	83 gal Diesel
DEF/ Urea tank	8.5 gal AdBlue

ELECTRICAL SYSTEM

Alternator	28 V / 100 A
Voltage	24 V
Batteries	2 × 12 V / 110 Ah / 750 A (in accordance with EN)
Lights	2 x LED floodlights at the front of the machine, rear parking lights and indicator lights

HYDRAULIC SYSTEM

Load limit control for energy-efficient operation	
Max. pump flow	2 × 87 gpm
Max. pressure	4641 / 5221 psi
Hydraulic tank	96.7 gal
Temperature-dependent fan drive	

TRANSMISSION

Travel drive all wheel, hydrostatic drive with infinitely variable axial piston motor and directly mounted travel brake valves, 2-stage power shift system	
Travel speed	0-12.4 mph
Gradeability	max. 46%
Turning radius	31'2"

SLEWING GEAR

Slewing ring	Double row slewing ring bearing
Drive	2-stage planetary gear with integrated multi-disc brake
Uppercarriage swing speed	0–7 rpm infinitely variable
Slewing lock	Electronically activated

UNDERCARRIAGE

Front axle	Steering axle with planetary drive, integrated wet multi-disc brake and oscillating lock
Rear axle	Planetary drive axle with integrated wet multi-disc brake, rigidly mounted
Stabilization	with 4-point stabilizers
Tires	Pneumatic tires, 4-fold. Further tires available on request.

BRAKES

Service brake	Hydraulically activated dual-circuit brake system acting on all four wheel pairs, lockable
Parking brake	Electro-hydraulically actuated spring-loaded disk brake on the front axle, works on both axles

OPERATOR'S CAB

Cab	Continuously variable elevation system up to a viewing height of 19'7"  Soundproof, insulating panoramic windows enabling all-round visibility, windscreen with pull-down sunblind, roof skylight, cab door sliding window, sliding door
Air-conditioning	Automatic climate control. Infinitely variable water heating with 8-speed fans, 10 adjustable nozzles, 4 set into the roof lining and 3 defrosting nozzles
Operator's seat	Air-sprung comfort seat with integrated headrest, safety belt, and lower lumbar support, optional seat heating. Allows comfortable working by offering universal adjustment possibilities of the seat position, the seat incline, and the position of the seat cushion in relation to the armrests and joysticks
Monitoring	Ergonomically-arranged, anti-glare controls, multi-functional display, automatic monitoring and storage of deviating operating conditions, (e.g. all hydraulic oil filters, hot/cold hydraulic oil temperature, coolant temperature and charge air temperature, diesel particle filter load), visual and acoustic warning up to the point of shutting feed forward control or reducing engine output. Individual sensor diagnosis using the multi-functional display, rear camera and side camera

Sound levels	Sound power level (outdoor area) L <sub>WA</sub> 98.8 dB(A) (measured) as per directive 2000/14/EC  L <sub>WA</sub> 101 dB(A) (guaranteed) as per directive 2000/14/EC  Sound pressure level (inside the cab) as per the standard ISO 6396 L <sub>pA</sub> 67 dB(A)
--------------	--

Certification as per CE directives

ENGINE

	Standard	Option
Charge air cooling	•	
Direct electronic fuel injection/common rail	•	
Advanced automatic idle incl. engine shut-off function	•	
ECO / Power Mode	•	
Engine preheating		•
Engine diagnostics interface	•	
Temperature-dependent fan drive	•	

UNDERCARRIAGE

All-wheel drive	•
Wet multi-disc brake for all 4 wheels	•
Front axle oscillating lock	•
2-speed powershift transmission	•
4-point stabilizers	•
Individually controllable 4-point stabilizers	•
Tool box	•
Special paint (customer paint work)	•

UPPERCARRIAGE

Separated cooling system for engine and hydraulic oil	•
Temperature-dependent fan drive	•
Fan drive reversing function	•
Automatic central lubrication system	•
Rear view camera	•
Side view camera	•
Travel alarm	•
Electric refuelling pump	•
Lighting protection	•
Special paint (customer paint work)	•

CAB

	Standard	Option
Safety glass, tinted windows (side, rear), sliding window clear glass	•	
Cabin with all clear glass windows		•
Cabin with penetration resistant glass front & top & right side window (classification P5A)		•
Cabin with bullet-proof glass (protection class P8B)		•
Sliding window in cab door	•	
Glass ceiling	•	
Windshield washer system	•	
Washing device for roof window		•
Air-cushioned operator seat with headrest, seatbelt, and lumbar support, consoles that move with the seat	•	
Seat heating		•
Joystick steering	•	
Steering column, height and tilt adjustable		•
Automatic air conditioning system	•	
Auxiliary heating incl. Timer		•
7" Multi-function display	•	
Document net	•	
Front and top guard for the cab (FOPS)	•	
Voltage converter 12 V		•
Digital Radio (DAB+, USB, Bluetooth and hands-free system)	•	
12V socket/cigarette lighter	•	
Catwalk for cabin, access ladder included	•	
Fire extinguisher, dry powder	•	

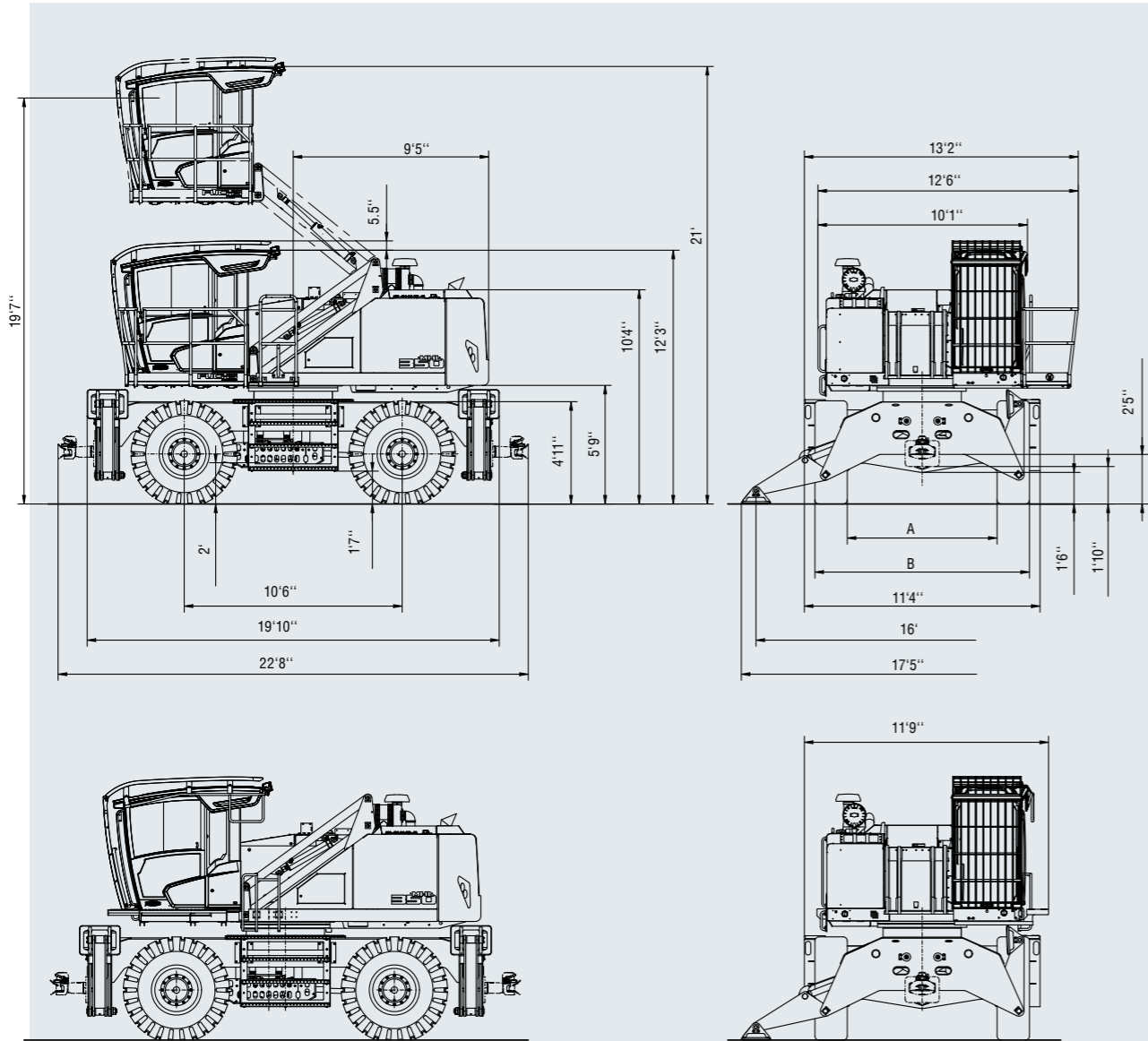
EQUIPMENT

Close proximity range limiter for dipperstick	•
Coolant and hydraulic oil level monitoring system	•
Filter system for attachments	•
Hose rupture valve for boom cylinder	•
Hose rupture valve for stick cylinder	•
Overload warning device	•
Quick coupling on dipperstick	•
Stick protection	•
Active cyclone prefilter (TOP AIR)	•
Boom cylinder damping system (piston accumulator)	•
Hydraulic oil preheating	•
Lubrication of the grab suspension by central lubrication system	•
Float switch	•
Light packages LED	•
LED front headlights	•
Trailer hitch	•
Fuchs Telematics System, incl. 5 years contract	•

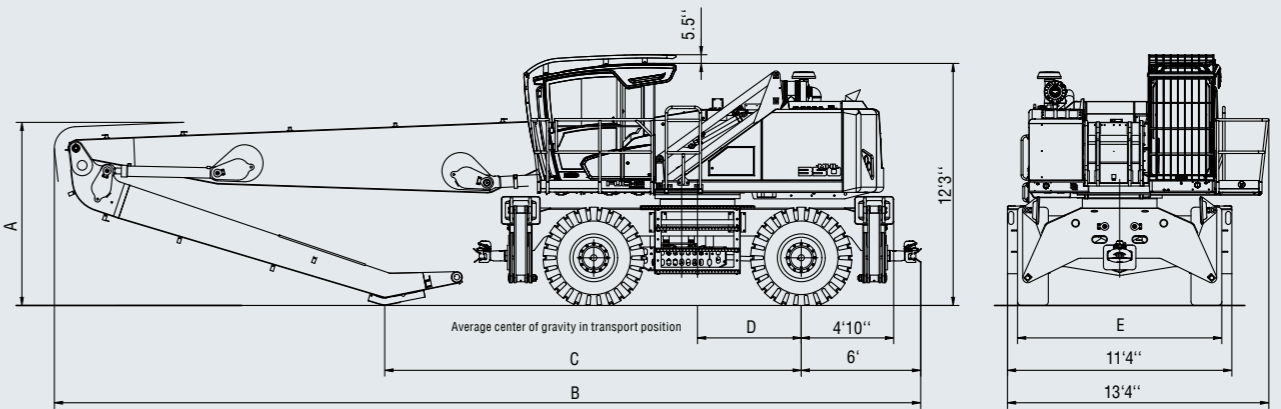
\* other cable reel types and cable lengths on request

DIMENSIONS | MHL350 HD

All dimensions in ft & in



TIRES	GOODYEAR	SOLIDEAL (HAULER)
A	6'7"	7'5"
B	10'8"	10'4"

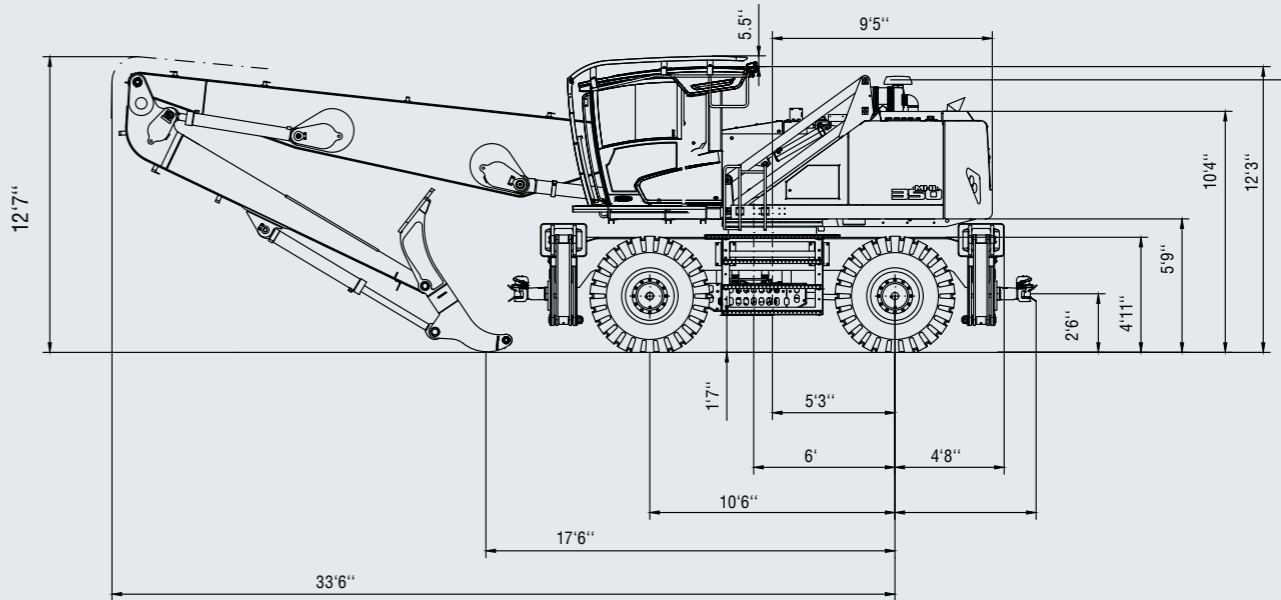


DIMENSIONS	REACH 52' 5"	REACH 49' 2"	REACH 45' 11"
A	11'2"	11'2"	11'1"
B	42'5"	42'5"	39'1"
C	19'7"	21'7"	19'3"
D	6'	5'	5'2"

TIRES	GOODYEAR	SOLIDEAL (HAULER)
E	10'8"	10'4"

DIMENSIONS | MHL350 HD LIVE HEEL 41'4"

All dimensions in ft & in



WORKING RANGE | MHL350 HD

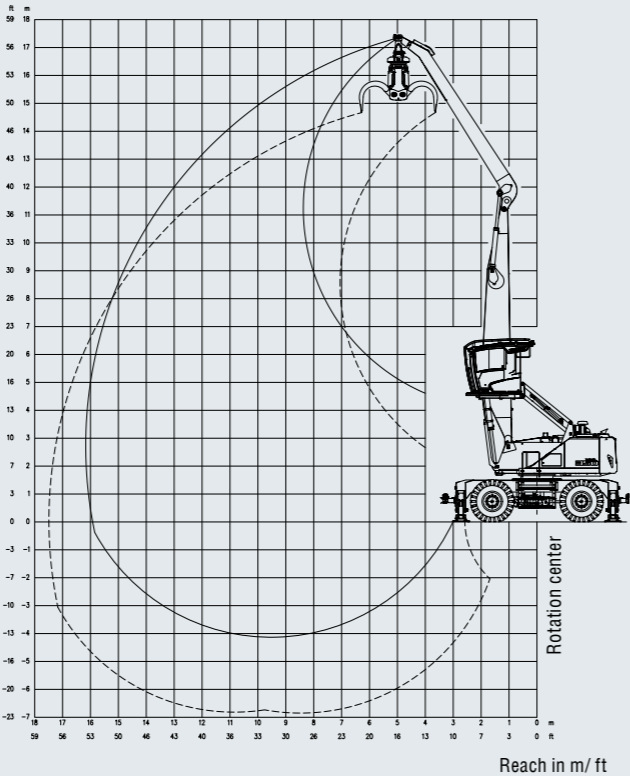
REACH 52'5" M WITH DIPPER STICK



Loading equipment	Box-type boom 27'10" Dipper stick 23' 7" Multi-tine grapple
-------------------	---

Grab size	Recommended attachments upon request
-----------	---

The lift capacity values are stated in imperial pounds (lbs). The pump pressure is 5,221 psi. In accordance with ISO 10567 the lift capacity values represents 75% of the static tipping loads or 87% of the hydraulic lifting force (marked \*). On solid and level ground the values apply to a swing range of 360°. The (...) values apply in the longitudinal direction of the undercarriage. The values for "not supported" only apply via the steering axle or the locked oscillating axle. The weights of the attached load hoisting equipment (grab, load hock, etc.) must be deducted from the lift capacity values. The working load of the lifting devise must be observed. In accordance with the EN 474-5 for object handling application hose rupture valves on the boom and stick cylinders, an overload warning device and the lift capacity table in the cab are required. For object handling application the machine has to be supported on a level ground.



LIFTING CAPACITY

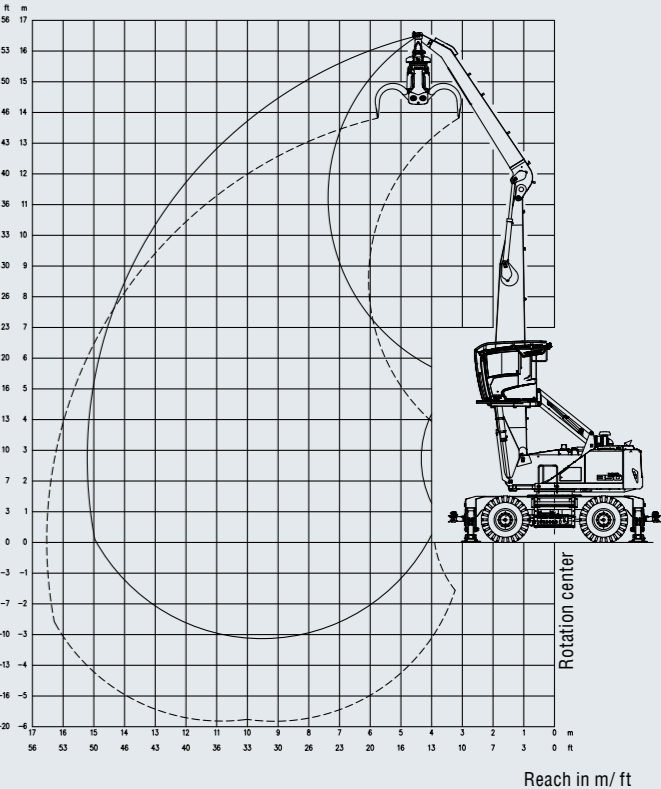
Height [ft]	Undercarriage outrigger	Reach [ft]							
		15	20	25	30	35	40	45	50
50	not supported	(10,700°)							
	4-point supported	10,700° (10,700°) 8,100° (8,100°)							
45	not supported	(10,700°)							
	4-point supported	10,700° (10,700°) 8,100° (8,100°)							
40	not supported	(12,100°)							
	4-point supported	12,100° (12,100°) 10,400° (10,400°) 7,700° (7,700°)							
35	not supported	(13,300°)							
	4-point supported	13,300° (13,300°) 12,000° (12,000°) 9,900° (9,900°) 6,300° (6,300°)							
30	not supported	(13,800°)							
	4-point supported	13,800° (13,800°) 12,400° (12,400°) 11,200° (11,200°) 8,600° (8,600°)							
25	not supported	(16,400°)							
	4-point supported	16,400° (16,400°) 14,300° (14,300°) 12,700° (12,700°) 11,400° (11,400°) 10,200° (10,200°) 5,900° (5,900°)							
20	not supported	(17,400°)							
	4-point supported	17,400° (17,400°) 15,000° (15,000°) 13,100° (13,100°) 11,600° (11,600°) 10,300° (10,300°) 7,600° (7,600°)							
15	not supported	(26,400°)							
	4-point supported	26,400° (26,400°) 23,900° (23,900°) 18,900° (18,900°) 15,800° (15,800°) 13,500° (13,500°) 11,800° (11,800°) 10,300° (10,300°) 8,900° (8,900°)							
10	not supported	(32,200)							
	4-point supported	38,300° (38,800°) 26,400° (26,400°) 20,200° (20,200°) 16,400° (16,400°) 13,800° (13,800°) 11,900° (11,900°) 10,300° (10,300°) 8,900° (8,900°)							
5	not supported	(10,500°)							
	4-point supported	10,500° (10,500°) 27,700° (27,700°) 21,000° (21,000°) 16,800° (16,800°) 14,000° (14,000°) 11,900° (11,900°) 10,200° (10,200°) 8,600° (8,600°)							
0	not supported	(8,300°)							
	4-point supported	8,300° (8,300) 18,900° (18,900°) 20,900° (20,900°) 16,800° (16,800°) 13,800° (13,800°) 11,600° (11,600°) 9,800° (9,800°) 8,000° (8,000°)							
-5	not supported	(8,700°)							
	4-point supported	8,700° (8,700) 15,500° (15,500°) 19,900° (19,900°) 16,000° (16,000°) 13,200° (13,200°) 11,000° (11,000°) 9,000° (9,000°) 7,000° (7,000°)							
-10	not supported	(15,000°)							
	4-point supported	15,000° (15,000°) 17,900° (17,900°) 14,600° (14,600°) 12,000° (12,000°) 9,800° (9,800°)							
Max. Reach 53 ft									
9	not supported	(4,300°)							
	4-point supported	4,300° (4,300°)							

REACH 49'2" M WITH DIPPER STICK

Loading equipment	Box-type boom 27'10" Dipper stick 20' 4" Multi-tine grapple
-------------------	---

Grab size	Recommended attachments upon request
-----------	---

The lift capacity values are stated in imperial pounds (lbs). The pump pressure is 5,221 psi. In accordance with ISO 10567 the lift capacity values represents 75% of the static tipping loads or 87% of the hydraulic lifting force (marked \*). On solid and level ground the values apply to a swing range of 360°. The (...) values apply in the longitudinal direction of the undercarriage. The values for "not supported" only apply via the steering axle or the locked oscillating axle. The weights of the attached load hoisting equipment (grab, load hock, etc.) must be deducted from the lift capacity values. The working load of the lifting devise must be observed. In accordance with the EN 474-5 for object handling application hose rupture valves on the boom and stick cylinders, an overload warning device and the lift capacity table in the cab are required. For object handling application the machine has to be supported on a level ground.



LIFTING CAPACITY

Height [ft]	Undercarriage outrigger	Reach [ft]							
		15	20	25	30	35	40	45	50
50	not supported	(9,500°)							
	4-point supported	9,500°(9,500°)							
45	not supported	(13,000°)							
	4-point supported	13,000°(13,000°) 10,300°(10,300°)							
40	not supported	(14,700°)							
	4-point supported	14,700°(14,700°) 13,000°(13,000°) 10,100°(10,100°)							
35	not supported	(16,200°)							
	4-point supported	16,200°(16,200°) 14,600°(14,600°) 12,700°(12,700°) 9,100°(9,100°)							
30	not supported	(17,000°)							
	4-point supported	17,000°(17,000°) 14,800°(14,800°) 13,100°(13,100°) 11,800°(11,800°) 6,600°(6,600°)							
25	not supported	(17,500)							
	4-point supported	17,800°(17,800°) 15,300°(15,300°) 13,400°(13,400°) 11,800°(11,800°) 10,500°(10,500°)							
20	not supported	(23,500°)							
	4-point supported	23,500°(23,500°) 18,900°(18,900°) 15,900°(15,900°) 13,700°(13,700°) 12,000°(12,000°) 10,500°(10,500°)							
15	not supported	(34,200°)							
	4-point supported	37,000°(37,000°) 26,000°(26,000°) 20,100°(20,100°) 16,500°(16,500°) 14,000°(14,000°) 12,100°(12,100°) 10,500°(10,500°) 4,000(6,000°)							
10	not supported	(11,000°)							
	4-point supported	11,000°(11,000°) 27,800°(27,800°) 21,100°(21,100°) 17,000°(17,000°) 14,200°(14,200°) 12,100°(12,100°) 10,400°(14,400°) 3,700(6,800°)							
5	not supported	(6,700°)							
	4-point supported	6,700°(6,700°) 20,300°(20,300°) 21,400°(21,400°) 17,100°(17,100°) 14,200°(14,200°) 11,900°(11,900°) 10,000°(10,000°) 3,700(6,800°)							
0	not supported	(7,200°)							
	4-point supported	7,200°(7,200°) 15,000°(15,500°) 20,700°(20,700°) 16,600°(16,600°) 13,700°(13,700°) 11,400°(11,400°) 9,400°(9,400°)							
-5	not supported	(14,400°)							
	4-point supported	14,400°(14,400°) 18,900°(18,900°) 15,500°(15,500°) 12,700°(12,700°) 10,400°(10,400°) 8,200°(8,200°)							
-10	not supported	(9,800)							
	4-point supported	13,400°(13,400°) 11,000°(11,000°)							
Max. Reach 49,9 ft									
9	not supported	(5,000)							
	4-point supported	5,400°(5,400°)							

WORKING RANGE | MHL350 HD

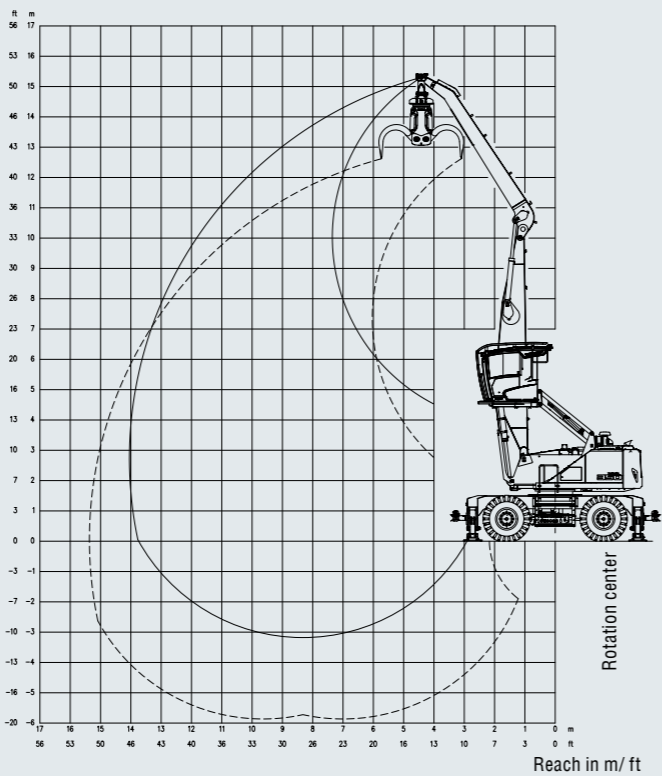
REACH 45'11" M WITH DIPPER STICK



Loading equipment	Box-type boom 23'11" Dipper stick 20' 4" Multi-tine grapple
-------------------	---

Grab size	Recommended attachments upon request
-----------	---

The lift capacity values are stated in imperial pounds (lbs). The pump pressure is 5,221 psi. In accordance with ISO 10567 the lift capacity values represents 75% of the static tipping loads or 87% of the hydraulic lifting force (marked °). On solid and level ground the values apply to a swing range of 360°. The (...) values apply in the longitudinal direction of the undercarriage. The values for "not supported" only apply via the steering axle or the locked oscillating axle. The weights of the attached load hoisting equipment (grab, load hock, etc.) must be deducted from the lift capacity values. The working load of the lifting devise must be observed. In accordance with the EN 474-5 for object handling application hose rupture valves on the boom and stick cylinders, an overload warning device and the lift capacity table in the cab are required. For object handling application the machine has to be supported on a level ground.



LIFTING CAPACITY

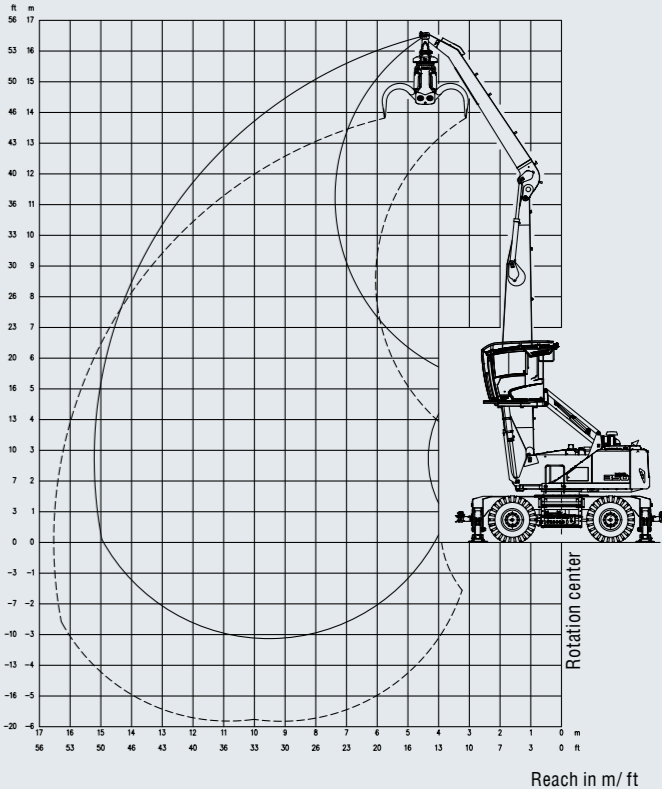
Height [ft]	Undercarriage outrigger	Reach [ft]							
		10	15	20	25	30	35	40	45
45	not supported				(9,900°)				
	4-point supported				9,900°(9,900°)				
40	not supported				(13,230°)	(10,140°)			
	4-point supported				13,230°(13,230°)	10,140°(10,140°)			
35	not supported				(14,990°)	(13,010°)	(9,480°)		
	4-point supported				14,990°(14,990°)	13,010°(13,010°)	9,480°(9,480°)		
30	not supported				(16,320°)	(13,670°)	(10,580°)	(7,500°)	
	4-point supported				16,320°(16,320°)	14,990°(14,990°)	12,350°(12,350°)	7,500°(7,500°)	
25	not supported				(17,420°)	(13,450°)	(10,360°)	(8,160°)	
	4-point supported				17,420°(17,420°)	15,430°(15,430°)	13,890°(13,890°)	10,360°(10,360°)	
20	not supported		(20,940°)		(17,420°)	(13,010°)	(10,140°)	(8,160°)	(5,950°)
	4-point supported		20,940°(20,940°)		18,520°(18,520°)	16,090°(16,090°)	14,330°(14,330°)	12,790°(12,270°)	5,950°(5,950°)
15	not supported		(27,780°)	(23,370)	(16,530)	(12,570)	9,900	(7,940)	(6,610)
	4-point supported		27,780°(27,780°)	24,910°(24,910°)	20,060°(20,060°)	16,980°(16,980°)	14,550°(14,550°)	12,790°(12,790°)	8,600°(8,600°)
10	not supported		(33,950)	(21,830)	(15,650)	(11,900)	(9,480)	(7,720)	(6,390)
	4-point supported		39,900°(39,900°)	27,780°(27,780°)	21,600°(21,600°)	17,640°(17,640°)	14,990°(14,990°)	12,790°(12,790°)	9,040°(9,040°)
5	not supported		(17,640°)	(20,280)	(14,770)	(11,460)	(9,260)	(7,500)	(6,400)
	4-point supported		17,640°(17,640°)	29,540°(29,540°)	22,490°(22,490°)	18,080°(18,080°)	14,990°(14,990°)	12,570°(12,570°)	9,260°(9,260°)
0	not supported	(6,170°)	(12,570°)	(19,180)	(14,110)	(11,020)	(49,040)	(7,500)	(6,390)
	4-point supported	6,170°(6,170°)	12,570°(12,570°)	29,540°(29,540°)	22,490°(22,490°)	17,860°(17,860°)	14,770°(14,770°)	12,130°(12,130°)	8,160°(8,160°)
-5	not supported		12,790°)	(18,740)	(13,890)	(10,800)	(8,820)	(7,280)	
	4-point supported		12,790°(12,790°)	25,123°(25,123°)	21,160°(21,160°)	16,980°(16,980°)	13,670°(13,670°)	10,800°(10,800°)	
-10	not supported				(13,670)	(10,800)			
	4-point supported				18,520°(18,520°)	14,770°(14,770°)			
Max. Reach 45.9									
8.8	not supported							(5,290°)	
	4-point supported							5,290°(5,290°)	

REACH 41'4" M WITH LIVE HEEL STICK

Loading equipment	Box-type boom 23'11" Dipper stick 15' 1" Live Heel Boom
-------------------	---

Grab size	Recommended attachments upon request
-----------	---

The lift capacity values are stated in metric tons (t).The pump pressure is 360 bar. In accordance with ISO 10567 the lift capacity values represents 75% of the static tipping loads or 87% of the hydraulic lifting force (marked °). On solid and level ground the values apply to a swing range of 360°. The (...) values apply in the longitudinal direction of the undercarriage. The values for "not supported" only apply via the steering axle or the locked oscillating axle. The weights of the attached load hoisting equipment (grab, load hooks, etc.) must be deducted from the lift capacity values. The working load of the lifting device must be observed. In accordance with EU Standard EN 474-5 for object handling applications hose rupture valves on the boom and stick cylinders, an overload warning device and the lift capacity table in the cab are required. For object handling application the machine has to be supported on a level ground.



LIFTING CAPACITY

Height [ft]	Undercarriage outrigger	Reach [ft]					
		15	20	25	30	35	40
40	not supported		(17.300°)	(12.200°)			
	4-point supported		17.300°(17.300°)	12.200°(12.200°)			
35	not supported		(19.900°)	(16.100)	(11.600)		
	4-point supported		19.900°(19.900°)	17.300°(17.300°)	12.000°(12.000°)		
30	not supported		(20.900°)	(16.100)	(11.700)	(8.700)	
	4-point supported		20.900°(20.900°)	17.600°(17.600°)	15.200°(15.200°)	9.500°(9.500°)	
25	not supported		(22.000°)	(15.700)	(11.500)	(8.700)	
	4-point supported		22.000°(22.000°)	18.100°(18.100°)	15.400°(15.400°)	13.400°(13.400°)	
20	not supported	(32.700°)	(21.900)	(15.100)	(11.100)	(8.500)	(6.600)
	4-point supported	32.700°(32.700°)	24.000°(24.000°)	19.100°(19.100°)	15.900°(15.900°)	13.500°(13.500°)	8.300°(8.300°)
15	not supported	(32.500)	(20.500)	(14.400)	(10.700)	(8.300)	(6.500)
	4-point supported	38.700°(38.700°)	26.500°(26.500°)	20.200°(20.200°)	16.400°(16.400°)	13.500°(13.500°)	10.800°(10.800°)
10	not supported		(19.100)	(13.600)	(10.300)	(8.000)	(6.400)
	4-point supported		28.200°(28.200°)	21.000°(21.000°)	16.400°(16.400°)	13.100°(13.100°)	10.000°(10.000°)
5	not supported		(18.100)	(13.000)	(9.900)	(7.800)	(6.300)
	4-point supported		26.800°(26.800°)	21.000°(21.000°)	16.400°(16.400°)	13.100°(13.100°)	10.000°(10.000°)
0	not supported		(17.700)	(12.700)	(9.700)	(7.700)	
	4-point supported		21.200°(21.200°)	19.600°(19.600°)	15.300°(15.300°)	11.900°(11.900°)	
-5	not supported		(12.600)				
	4-point supported		16.700°(16.700°)	13.100°(13.100°)			
Max. Reach 41.4							
9	not supported					(5.800)	
	4-point supported					6.400°(6.400°)	



## LOADING EQUIPMENT

- Reach up to 52'5"
- Purpose built loading equipment
- Kinematics designed for maximum stockpiling height
- Stockpiles in 2nd row can also be reached
- Grab rotation speed and pressure regulation
- Optimally arranged hydraulic pipes and hoses



## LIVE HEEL

- Specially developed for wood handling
- Perfect for handling of tree length wood



## CABIN

- Hydraulically adjustable cab
- Large skylight
- Sliding window in cab door
- Tinted safety glass
- Automatic air conditioning system
- 19'7" eye level for perfect overview



## UPPERCARRIAGE

- Separated cooling system for engine, hydraulic oil cooler and AC condenser
- Temperature-controlled fan drives
- Highly energy-efficient
- Cover plates, robust steel design
- Rear and side view camera



## UNDERCARRIAGE

- Ground clearance 1'6"
- FEM-based, robust, torsion-resistant steel construction, symmetrical arrangement of the axles
- Protection guard for drivetrain



## TRAILER

- Pulling capacity up to 176,370 lbs
- Different trailer hitches on demand
- Speedometer standard

# GREAT FEATURES

## COME STANDARD WITH YOUR FUCHS

### AIR-CUSHIONED COMFORT SEAT

with integrated headrest, safety belt and lumbar support



### STORAGE SPACE

storage and cup holder air conditioned



### 7" TOUCH SCREEN DISPLAY

with large dimensions provides great overview and info at a glance



### FUCHS SERVICE PLATFORM

safe place for daily checks and maintenance



### HIGH PRESSURE FILTRATION SYSTEM FOR ATTACHMENTS

effective protection against contamination of hydraulic oil from damaged or leaking attachments



### BOOM CYLINDER DAMPING SYSTEM

for smooth operations



### QUICK FUSE CHECK BUTTON

makes it quick and easy to check the fuses of your Fuchs



### SEPARATE COOLING SYSTEM

for engine and hydraulic oil cooler

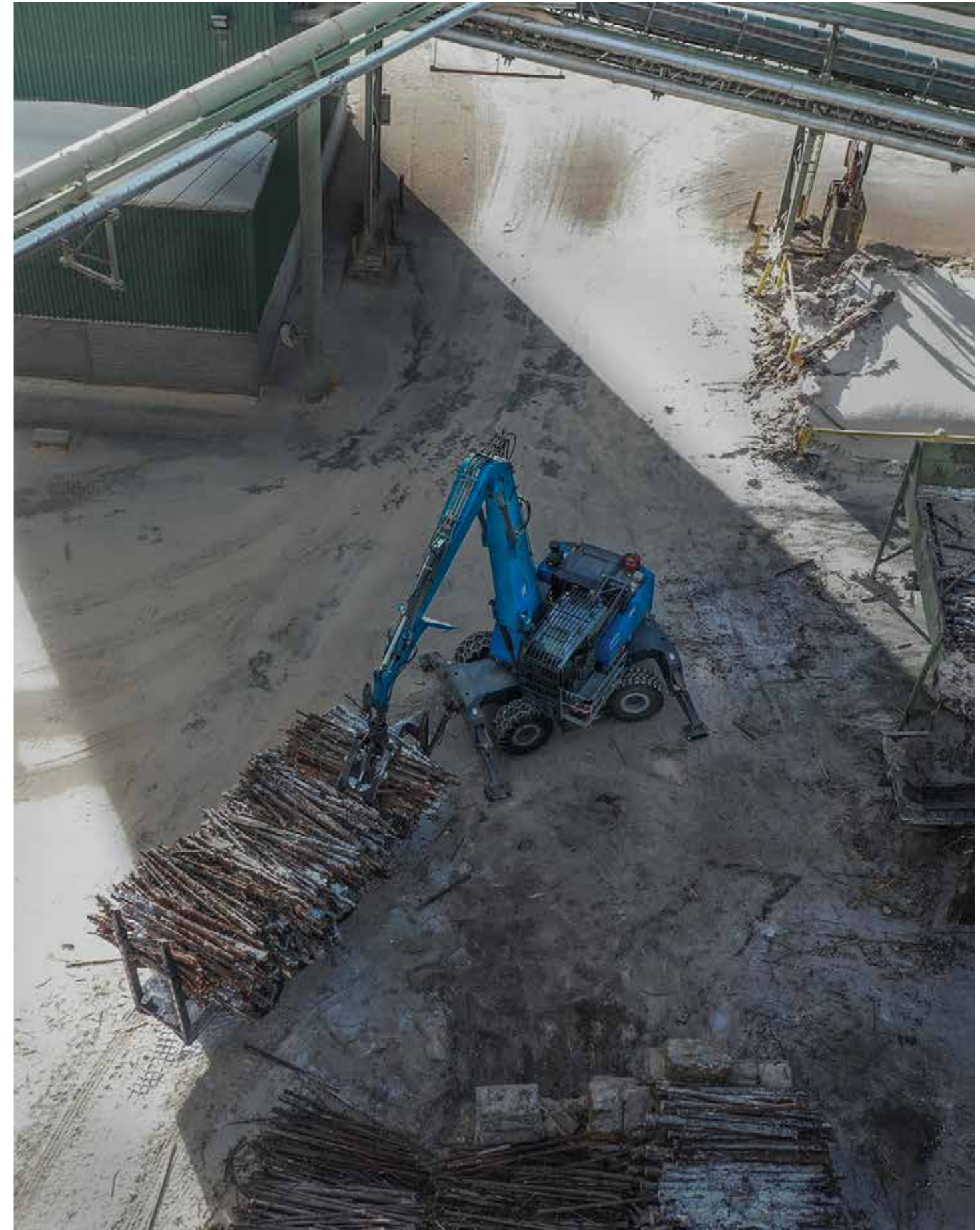


### AUTOMATED GREASING SYSTEM

ensures key components running smoothly









[www.terex-fuchs.com](http://www.terex-fuchs.com)

February 2021. Product specifications and prices are subject to change without notice or obligation. The photographs and/or drawings in this document are for illustrative purposes only. Refer to the appropriate Operator's Manual for instructions on the proper use of this equipment. Failure to follow the appropriate Operator's Manual when using our equipment or to otherwise act irresponsibly may result in serious injury or death. The only warranty applicable to our equipment is the standard written warranty applicable to the particular product and sale and Terex makes no other warranty, express or implied. © Terex Corporation 2020 - Terex, the Terex Crown design, Fuchs and Works For You are trademarks of Terex Corporation or its subsidiaries.

Fuchs USA | 11001 Electron Drive | Louisville, KY 40299 | USA | Phone: +1 502 640 6001 | Fax: +49 (0) 7253 84-102 | [sales.fuchusa@terex.com](mailto:sales.fuchusa@terex.com)