

# 400S/460SJ

## TELESCOPIC BOOM LIFTS



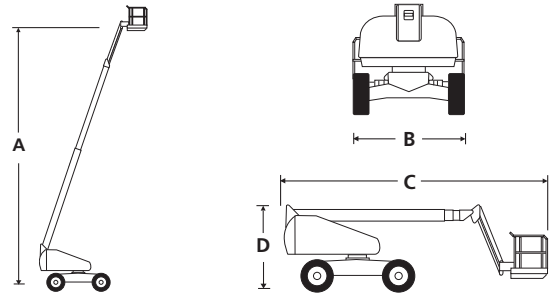
- Rugged all-terrain telescopic boom lifts
- Powerful 4 wheel drive
- Ultra-tight turning radius
- Fully proportional boom functions
- Simple to operate and easy to maintain

 **snorkel**  
[www.snorkellifts.com](http://www.snorkellifts.com)

# TELESCOPIC BOOM LIFTS

# 400S/460SJ

DIMENSIONS	400S	460S
Max. working height	46 ft	52 ft
Max. platform height (A)	40 ft	46 ft
Max. horizontal reach	33 ft	40 ft
Platform size	8 ft x 3 ft	8 ft x 3 ft
Overall width (B)	7 ft 10 in	7 ft 10 in
Overall length (C)	24 ft 10 in	28 ft 5 in
Stowed height (D)	7 ft 11 in	7 ft 11 in
Ground clearance	12.5 in	12.5 in

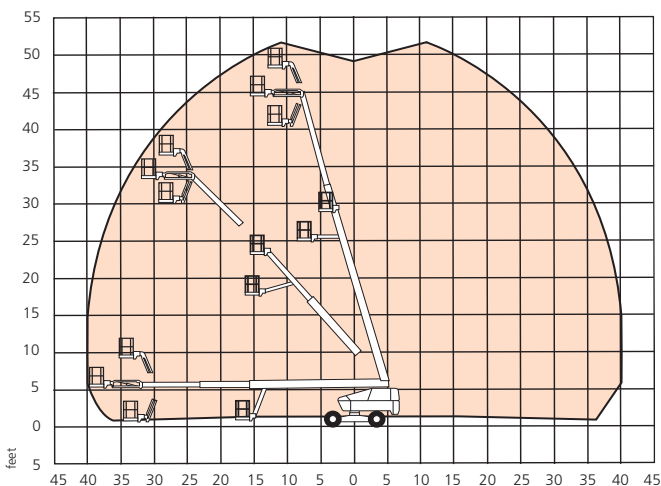


PERFORMANCE		
Platform capacity (SWL)	600 lbs	600 lbs
Max. wind speed	28 mph	28 mph
Max. drive height	40 ft	46 ft
Max. drive speed (stowed)	3.5 mph	3.5 mph
Max. drive speed (elevated)	0.75 mph	0.75 mph
Jib length	n/a	6 ft 6 in
Jib working arc	n/a	135°
Platform rotation	157°	150°
Superstructure rotation	360° continuous	360° continuous
Tailswing	35.5 in	35.5 in
Gradeability	50%	50%
Inside turning radius	5 ft 5 in	5 ft 5 in
Outside turning radius	15 ft 9 in	15 ft 9 in
Tires	355/55 D625 foam filled lug	
Controls	All proportional controls	
Drive system	4 wheel drive	

POWER		
Power source	Kubota V1505 24.9hp diesel	
Auxillary power unit	12V DC	12V DC

WEIGHT		
Weight	14,550 lbs**	15,750 lbs**

## WORKING ENVELOPE



## STANDARD FEATURES

- Snorkel Guard™ secondary guarding system
- Hydraulic platform rotation
- Four wheel drive
- Swing-out engine tray
- All proportional controls
- Power line to platform
- Tilt alarm & cut out
- Motion alarm
- Flashing amber light
- DC emergency operation
- Tri-entry platform
- 2 year parts & labor, 5 year structural warranty
- ANSI compliant

## OPTIONS

- Special paint colors
- AC generator 110V/240V
- Non-marking tires
- Dual fuel
- Airline to platform
- Aircraft package
- Deluxe aircraft package
- Cold weather package
- Extreme cold weather package
- Extreme environment package
- Light package
- Tow package
- Glazier package
- CSA compliant

**snorkel**

www.snorkellifts.com

P.O. Box 1160  
 St. Joseph, MO 64502-1160, USA  
 Tel: 1 (785) 989-3000  
 Toll-free: 1 (800) 255-0317  
 Fax: 1 (785) 989-3070  
 Email: sales.usa@snorkellifts.com

ANSI Specification Specifications subject to change without notice. Photos and diagrams in this brochure are for promotional purposes only.  
 ©Snorkel 2016 Refer to appropriate Snorkel operators manual for detailed instructions on the proper use and maintenance.

\*\* Preliminary weight - confirm machine weight at time of ordering.