

# 600S/660SJ

## TELESCOPIC BOOM LIFTS



- Rugged all-terrain telescopic boom lifts
- Powerful 4 wheel drive
- Ultra-tight turning radius
- Fully proportional boom functions
- Simple to operate and easy to maintain

 **snorkel**  
[www.snorkellifts.com](http://www.snorkellifts.com)

# TELESCOPIC BOOM LIFTS

# 600S/660SJ

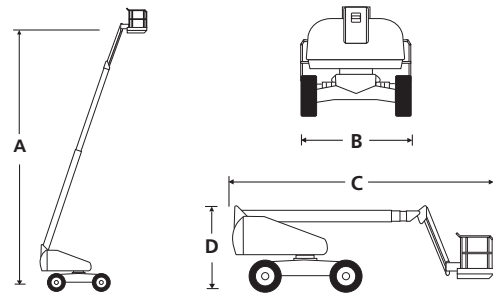
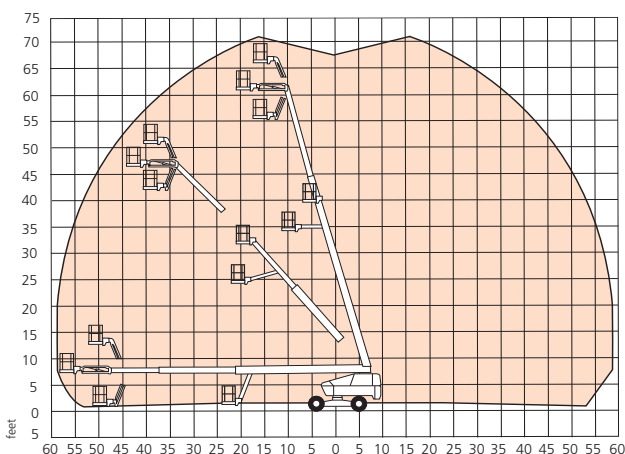
DIMENSIONS	600S	660SJ
Max. working height	66 ft 6 in	72 ft 8 in
Max. platform height (A)	60 ft 6 in	66 ft 8 in
Max. horizontal reach	52 ft 2 in	59 ft
Platform size	8 ft x 3 ft	8 ft x 3 ft
Overall width (B)	7 ft 10 in	7 ft 10 in
Overall length (C)	30 ft 2 in	34 ft 5 in
Transport length	28 ft	28 ft
Stowed height (D)	8 ft 4 in	8 ft 4 in
Transport height	10 ft 9 in	10 ft 9 in
Ground clearance	12.5 in	12.5 in

PERFORMANCE		
Platform capacity (SWL)	600 lbs	600 lbs
Max. drive height	60 ft 6 in	66 ft 8 in
Max. wind speed	28 mph	28 mph
Max. drive speed (stowed)	3.5 mph	3.5 mph
Max. drive speed (elevated)	0.6 mph	0.6 mph
Jib length	n/a	6 ft 6 in
Jib working arc	n/a	135°
Platform rotation	157°	150°
Superstructure rotation	360° continuous	360° continuous
Tailswing	47 in	47 in
Gradeability	45%	43%
Inside turning radius	5 ft 5 in	5 ft 5 in
Outside turning radius	15 ft 9 in	15 ft 9 in
Tires	355/55 D625 foam filled lug	
Controls	All proportional controls	
Drive system	4 wheel drive	

POWER		
Power source	Kubota V2403T engine 44kW / 59hp	
Auxillary power unit	12V DC	12V DC

WEIGHT		
Weight	23,500 lbs**	27,283 lbs**

## WORKING ENVELOPE



## STANDARD FEATURES

- Snorkel Guard™ secondary guarding system
- Hydraulic platform rotation
- Four wheel drive
- Swing-out engine tray
- All proportional controls
- Power line to platform
- Tilt alarm & cut out
- Motion alarm
- Horn
- DC emergency operation
- Tri-entry platform
- Flashing amber light
- 2 year parts & labor, 5 year structural warranty
- ANSI compliant

## OPTIONS

- Special paint colors
- Airline to platform
- AC generator 110V/240V
- Non-marking tires
- Dual fuel
- Aircraft package
- Deluxe aircraft package
- Cold weather package
- Extreme cold weather package
- Extreme environment package
- Tow package
- Glazier package
- Light package
- CSA compliant

**snorkel**

www.snorkellifts.com

P.O. Box 1160  
 St. Joseph, MO 64502-1160, USA  
 Tel: 1 (785) 989-3000  
 Toll-free: 1 (800) 255-0317  
 Fax: 1 (785) 989-3070  
 Email: sales.usa@snorkellifts.com

ANSI Specification Specifications subject to change without notice. Photos and diagrams in this brochure are for promotional purposes only.  
 ©Snorkel 2016 Refer to appropriate Snorkel operators manual for detailed instructions on the proper use and maintenance.

\*\* Preliminary weight - confirm machine weight at time of ordering.