

AB60J

ARTICULATED BOOM LIFTS



- Tough & reliable diesel articulated boom lift
- Powerful 4 wheel drive for rough terrain
- Robust, rental tough design
- Simple to operate and maintain
- Ideal for both maintenance and construction applications

 **snorkel**
www.snorkellifts.com

ARTICULATED BOOM LIFTS

AB60J

DIMENSIONS AB60J

Max. working height	66 ft
Max. platform height	60 ft
Max. horizontal reach	43 ft 1 in
Clearance height at max. outreach	19 ft 6 in
Platform size	8 ft x 3 ft
Overall width	7 ft 11.5 in
Overall length (A)	29 ft 2 in
Stowed height (B)	8 ft 3 in
Ground clearance	12 in

PERFORMANCE

Platform capacity (SWL)	500 lbs
Max. drive height	60 ft
Max. wind speed	28 mph
Max. drive speed (stowed)	3.2 mph
Max. drive speed (elevated)	0.6 mph
Jib length	6 ft
Jib working arc	75°
Platform rotation	180°
Superstructure rotation	360° continuous
Tailswing (riser boom elevated)	0 in
Tailswing (riser boom stowed)	60 in
Raise/lower time	125/121 sec
Gradeability	20%
Inside turning radius	13 ft 3 in
Outside turning radius	20 ft 3 in
Tires	15 in x 19.5 in foam filled lug
Controls	proportional joystick drive, lift & rotation
Drive system	4 wheel drive

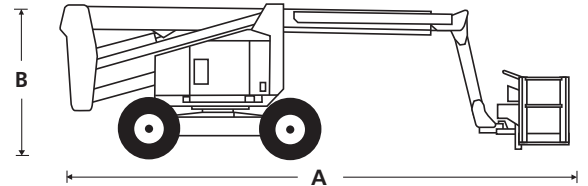
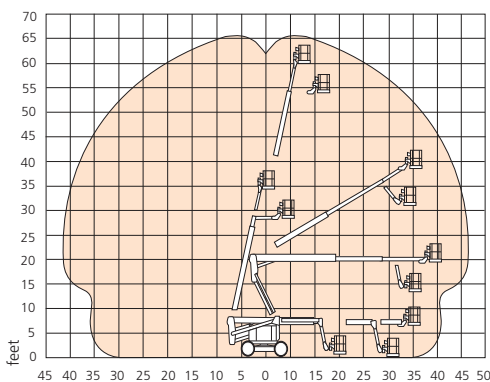
POWER

Power source Kubota 59hp Tier 4i Flex V2403 Turbo Diesel

WEIGHT

Weight 24,800 lbs

WORKING ENVELOPE



STANDARD FEATURES

- Snorkel Guard™ secondary guarding system
- 6 ft, 75° jib
- Hydraulic platform rotation
- 360° continuous turntable rotation
- Proportional drive, lift & swing
- Dual lanyard attachment points
- Horn
- Rheostat control at ground for boom functions
- Power line to platform
- 5° tilt alarm
- Drive motion alarm
- Flashing amber light
- 2 year parts & labor, 5 year structural warranty
- ANSI compliant

OPTIONS

- Special paint colors
- Airline to platform
- AC generator 110V/240V
- Non-marking tires
- Aircraft package
- Deluxe aircraft package
- Cold weather package
- Extreme cold weather package
- Extreme environment package
- Light package
- Tow package
- Glazier package
- CSA compliant

snorkel www.snorkellifts.com

P.O. Box 1160
 St. Joseph, MO 64502-1160, USA
 Tel: 1 (785) 989-3000
 Toll-free: 1 (800) 255-0317
 Sales Fax: 1 (785) 989-3070
 Parts Fax: 1 (785) 989-3077